

EDEN MIDCALF
— SALES & LETTINGS —



106

ASKING PRICE

£264,500

Enville Road

Stourbridge, DY7 6BN

PROPERTY SUMMARY

A beautifully improved three bedroom semi-detached family house occupying a pleasant location within sought after Kinver village. Enjoying stunning views towards Kinver Edge, the property offers a generously proportioned layout which is attractively appointed throughout and "ready to move into". The property enjoys a landscaped low maintenance rear garden, including a bar/potential home office (with power and lighting).

3



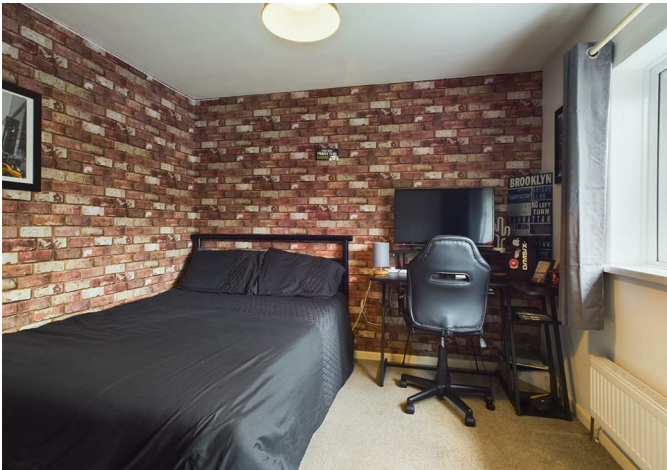
1



1







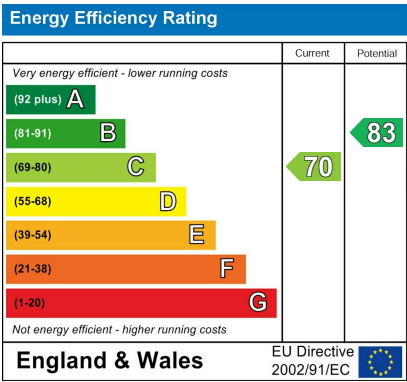




3

1

1



Agents Note: Whilst every care has been taken to prepare these particulars, they are for guidance purposes only. All measurements are approximate and are for general guidance purposes only and whilst every care has been taken to ensure their accuracy, they should not be relied upon and potential buyers/tenants are advised to recheck the measurements

EDEN MIDCALF

SALES & LETTINGS

28 High Street
Kinver
DY7 6HF

01384 878000

<https://www.edenmidcalf.co.uk/cor-us/>